



# GAT MONTHLY MEMBERSHIP PROGRESS REPORT

Results as of: 2/28/2021

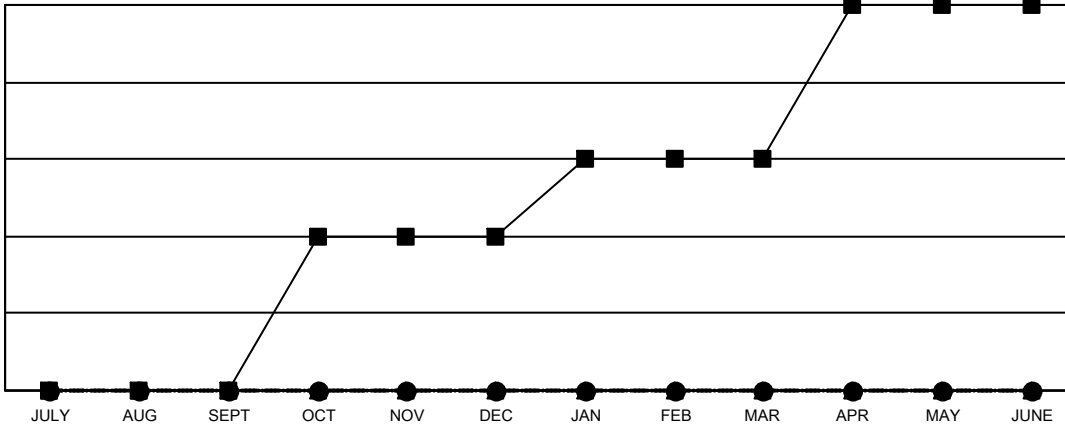
Multiple District 17

LOCATION: KANSAS

Clubs			
RESULTS FOR 2020-2021			
QUARTER	NEW CLUB GOAL	NEW CLUBS	DROPPED CLUBS
JULY/AUG/SEPT	0	0	0
OCT/NOV/DEC	2	0	1
JAN/FEB/MAR	1	0	0
APR/MAY/JUNE	2	0	0

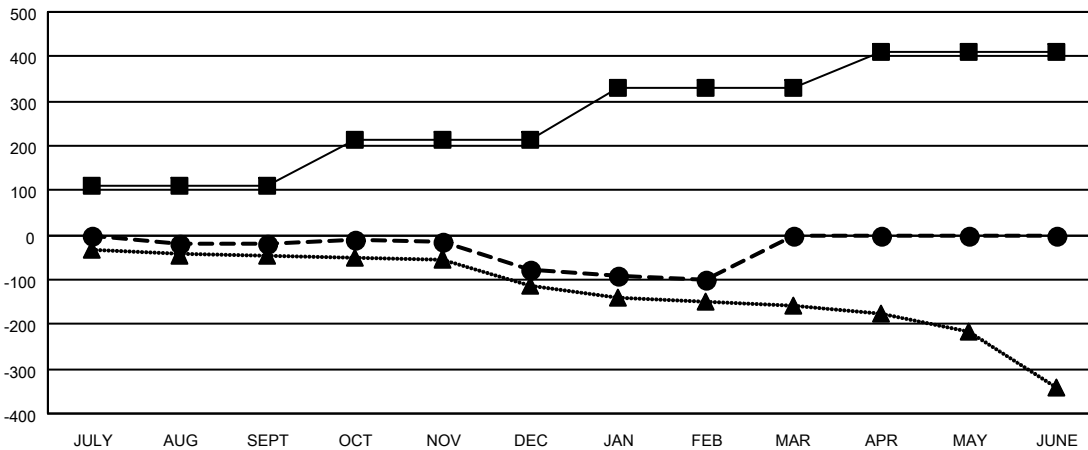
Members			
RESULTS FOR 2020-2021			
QUARTER	MEMBER GROWTH NET GOAL	MEMBER GROWTH ACTUAL	DROPPED MEMBERS ACTUAL (including transfers)
JULY/AUG/SEPT	111	79	94
OCT/NOV/DEC	101	92	144
JAN/FEB/MAR	116	26	43
APR/MAY/JUNE	81	0	0

GOALS AND ACTUAL NEW CLUBS CUMULATIVE



- - CURRENT YEAR GOALS FOR NEW CLUBS
- - CURRENT YEAR ACTUAL NEW CLUBS
- ▲ - LAST YEAR ACTUAL NEW CLUBS

GOALS AND ACTUAL MEMBERS CUMULATIVE



- - MEMBER GROWTH NET GOAL
- - MEMBER GROWTH ACTUAL
- ▲ - LAST YEAR MEMBERSHIP ACTUAL

DROPPED CLUBS: 1	
<u>DROPPED MEMBERS</u>	
DECEASED	53
CLUB CANCELLED	8
OTHER	220
<b>TOTAL</b>	<b>281</b>

80 CLUBS OF 219 ADDED 1 OR MORE NEW MEMBERS

[CLICK HERE FOR CUMULATIVE MEMBERSHIP DATA](#)

<u>GENDER DISTRIBUTION</u>	
MALE	2,979 (69.86%)
FEMALE	1,285 (30.14%)
TOTAL FAMILY UNIT MEMBERS	955
FAMILY MEMBERS PAYING HALF DUES	486